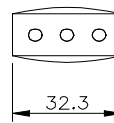
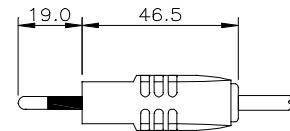
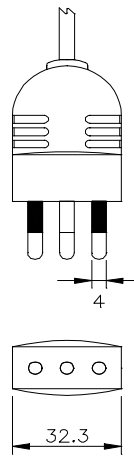


C36

Italian 3 Pole with Earth Plug 250V 10A



General Description:

The body of the plug is constructed from resilient nylon

The component parts are moulded into an integral inner moulding which forms the insulated sleeve for the live and neutral pins for added security.

Rewireable plug for supply line from 0.5mm² up to 1mm²

All cordsets are 100% electrically tested

Approved IMQ licence No. 02A9600231

The Company is approved to ISO 9001: 2000 Certificate No. FM 00928

